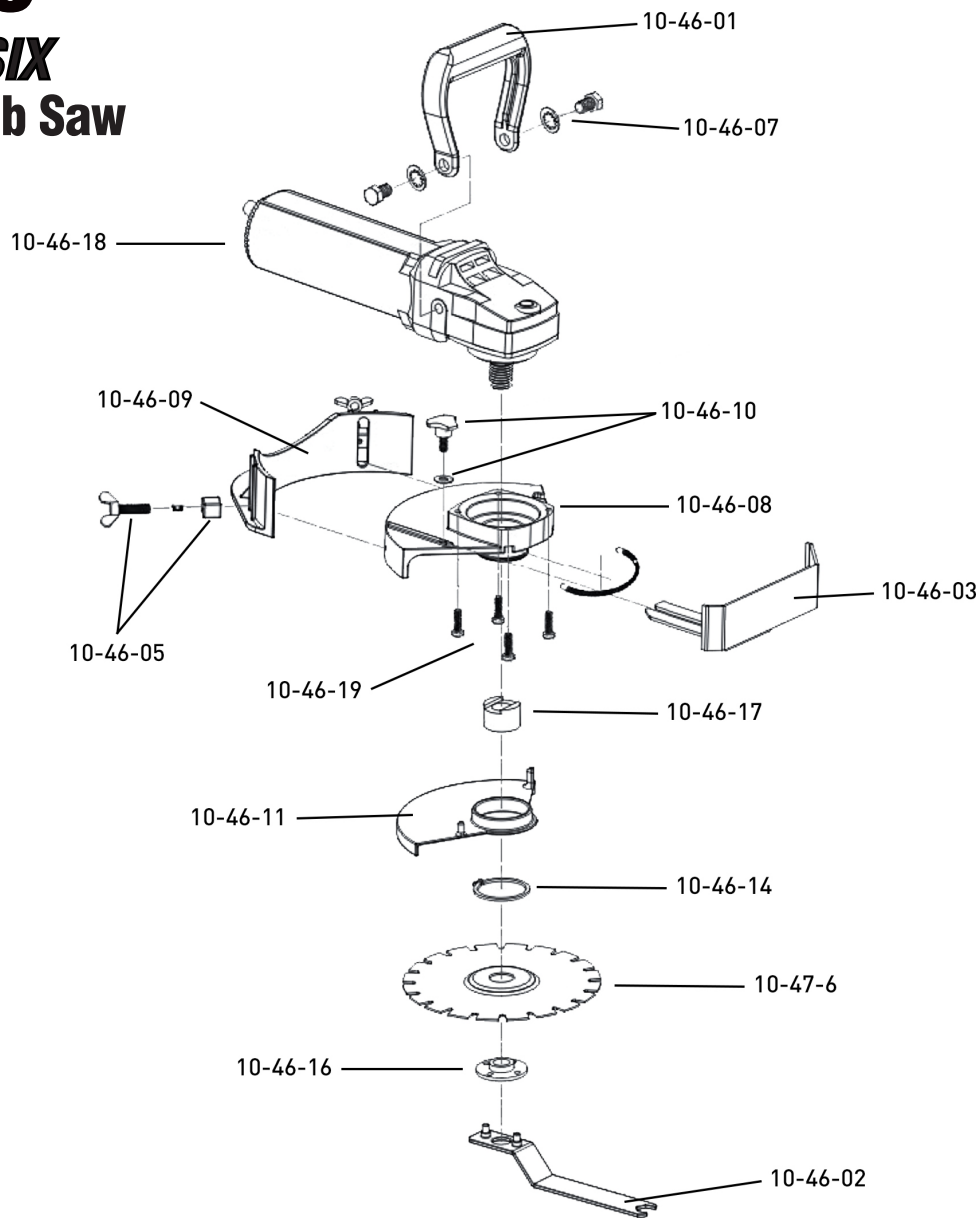


10-46

SUPER SIX

6 in. Jamb Saw



REPLACEMENT PARTS LIST

Part #	Description
10-46-01	Handle
10-46-02	Spanner Wrench
10-46-03	Depth Gauge
10-46-04	Return Spring (3-pack); (not shown)
10-46-05	Screws, Spacers, & Spring (2-pack)
10-46-07	Handle Bolt & Lock Washer

Part #	Description
10-46-08	Mounting Body
10-46-09	Height Adjustment Skirt
10-46-10	Screw Knob & Washer for Depth Gauge
10-46-11	Safety Guard
10-46-12	Return Spring (not shown)
10-46-14	Snap Ring

REPLACEMENT PARTS LIST

Part #	Description
10-46-16	Blade Retainer Nut
10-46-17	Arbor Spacer
10-46-18	Motor Unit
10-46-19	Mounting Screws (4-pack)
10-46-20	Replacement Switch (not shown)
10-46-21	Carbon Brushes (not shown)
10-47-6	6-3/16" 20-Tooth Saw Blade

REPLACEMENT PARTS LIST

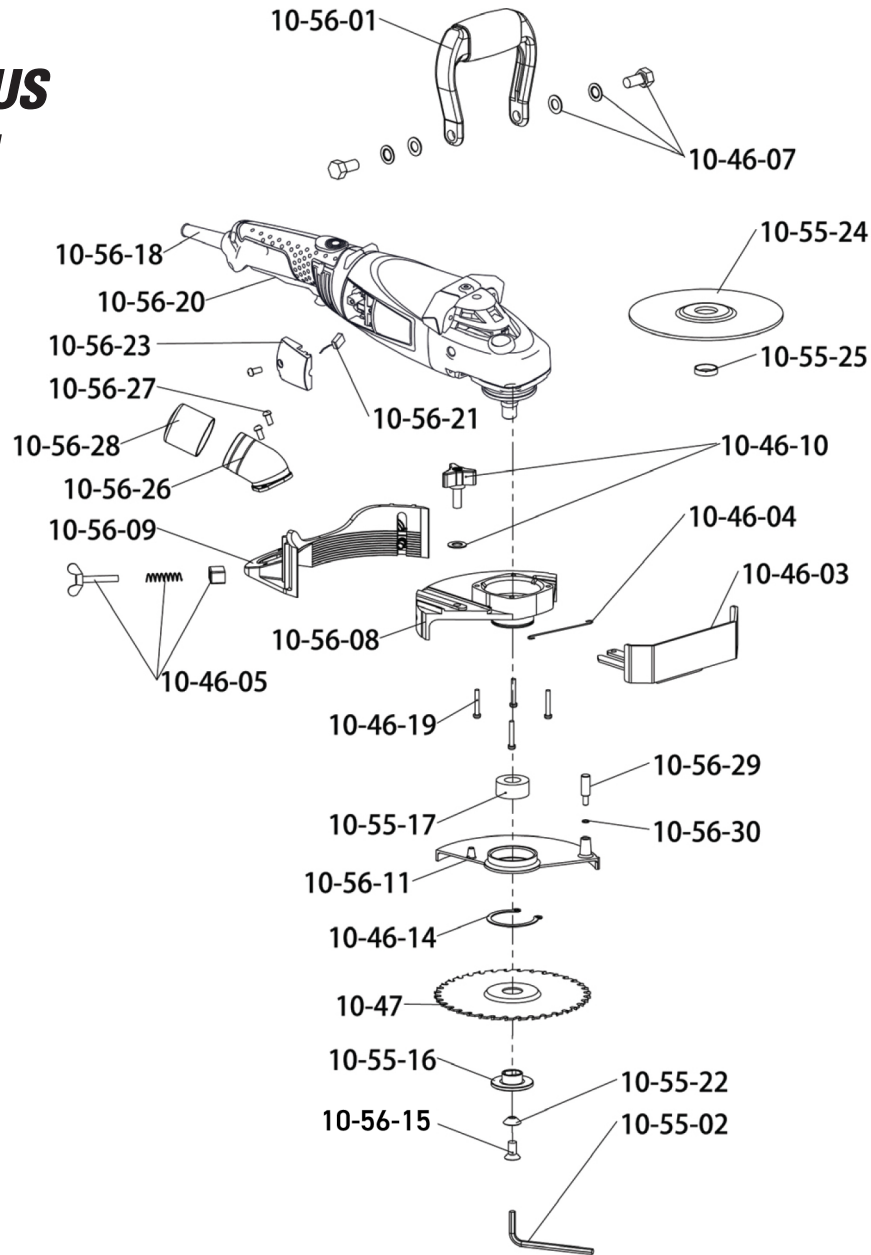
Part #	Description
10-55-16	Blade Clamp / Blade Screw
10-55-17	Arbor Spacer
10-55-18	Motor Unit
10-46-19	Mounting Screws (4-pack)
10-55-20	Replacement Switch
10-47	6-3/16" (158mm) Cupped Arbor, Carbide Tip Saw Blade

Part #	Description
10-55-21	Carbon Brushes (2-pack)
10-55-22	Washer
10-55-23	Tool for Disassembling Brushes
10-55-24	Masonry Blade
10-55-25	Masonry Blade Adapter

10-56

LONGNECK PLUS

6 in. Jamb Saw



REPLACEMENT PARTS LIST

Part #	Description
10-56-01	Handle
10-55-02	Allen Wrench
10-46-03	Depth Gauge
10-46-04	Return Spring
10-46-05	Screws, Spacers, Spring (2-pack)
10-46-07	Handle Bolt & Lock Washer

Part #	Description
10-56-08	Mounting Plate
10-56-09	Height Adjustment Skirt
10-46-10	Screw Knob & Washer for Depth Gauge
10-56-11	Safety Blade Guard
10-46-14	Snap Ring
10-56-15	Blade Screw

REPLACEMENT PARTS LIST

Part #	Description
10-55-16	Blade Clamp, Screw, & Washer
10-55-17	Arbor Spacer
10-56-18	Motor
10-46-19	Mounting Screws (4-pack)
10-56-20	Switch
10-56-21	Carbon Brushes (2-pack)
10-47-2	6-3/16" 36-Tooth Saw Blade
10-47-6	6-3/16" 20-Tooth Saw Blade
10-55-22	Washer
10-56-23	Brush Cover

Part #	Description
10-55-24	Masonry Blade
10-55-25	Masonry Blade Adapter
10-56-26	Vacuum Pipe
10-56-27	Mounting Screws (2-pack)
10-56-28	Cap of Vacuum Pipe
10-56-29	Blade Guard Handle Knob
10-56-30	O-shaped Rubber Loop
10-56-31	Carrying Case
10-56-33	Power Cord