

9" Adhesive Trowels

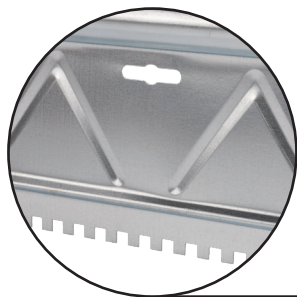


COMFORTABLE GRIP

Designed with rolled top handle for better control









DURABLE

Forged from .8 mm galvanized steel for rigidity



REINFORCED RIDGES

Embossed with ridges for added strength

Item #	Notch Size	Application
48768	1/16" x 1/16" x 1/16" SQ 	For carpet tile, fiberglass sheet, felt-backed sheet, luxury vinyl tile, plank, and cork underlayment
48769	3/32" x 3/32" x 3/32" FTV 	For smooth-backed carpet and attached foam backing on carpets
48770	1/16" x 1/16" x 3/32" U 	For vinyl composition tile (VCT), vinyl tile, vinyl plank, and rubber tile
48771	1/32" x 1/16" x 1/32" U 	For luxury vinyl tile (LVT) and vinyl-backed carpet tiles on porous and non-porous substrates
48772	1/16" x 1/16" x 1/16" FTV 	For carpet (especially direct glue-down textured and secondary-backed carpets) and certain resilient flooring like vinyl-backed, felt/mineral-backed, sheet goods, VCT, LVT/LVP, and rubber flooring
48774	1/8" x 1/8" x 1/8" FTV 	For installing textured or rough-backed carpets using direct glue-down methods. It's also suitable for some resilient flooring installations, like sheet vinyl and cork underlayment.
48775	1/8" x 1/8" x 1/8" V 	For thinset application of ceramic tile 8" x 8" or smaller, laminated wood plank flooring, flat milled solid & shorts or plywood
48776	1/4" x 1/4" x 1/4" SQ 	For pre-finished parquet and wall base

Scan here for PRODUCT INFORMATION



The ROBERTS® roll top adhesive spreaders are professionally designed for applying a variety of flooring adhesives. These 9" spreaders are forged from galvanized steel and are designed with a curved handle for better control. Blade surface is embossed with ridges for added strength. Follow adhesive manufacturer's recommendation for tool notch size and style.