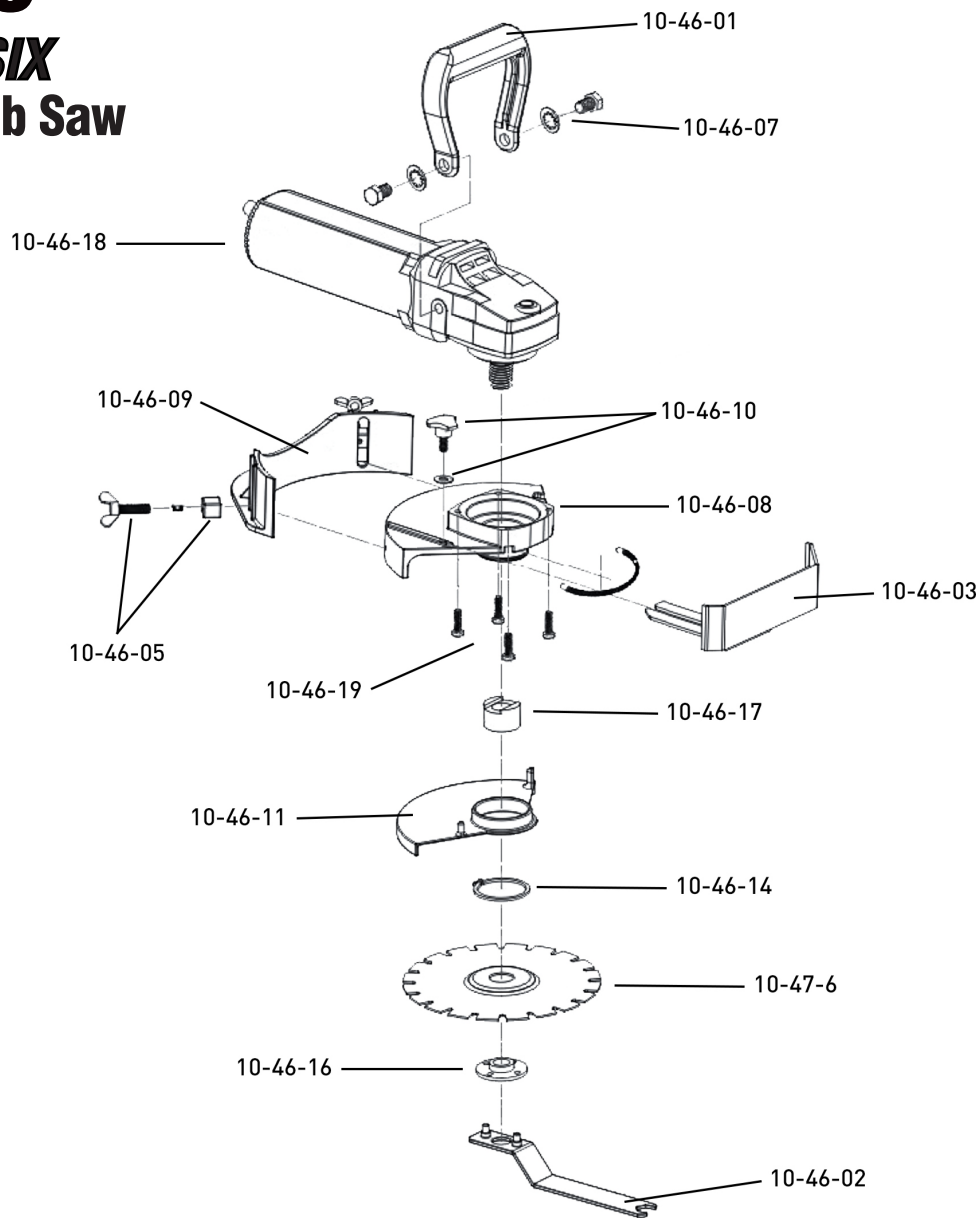


# 10-46

## *SUPER SIX*

### 6 in. Jamb Saw



## REPLACEMENT PARTS LIST

Part #	Description
10-46-01	Handle
10-46-02	Spanner Wrench
10-46-03	Depth Gauge
10-46-04	Return Spring (3-pack); (not shown)
10-46-05	Screws, Spacers, & Spring (2-pack)
10-46-07	Handle Bolt & Lock Washer

Part #	Description
10-46-08	Mounting Body
10-46-09	Height Adjustment Skirt
10-46-10	Screw Knob & Washer for Depth Gauge
10-46-11	Safety Guard
10-46-12	Return Spring (not shown)
10-46-14	Snap Ring

# REPLACEMENT PARTS LIST

Part #	Description
10-46-16	Blade Retainer Nut
10-46-17	Arbor Spacer
10-46-18	Motor Unit
10-46-19	Mounting Screws (4-pack)
10-46-20	Replacement Switch (not shown)
10-46-21	Carbon Brushes (not shown)
10-47-6	6-3/16" 20-Tooth Saw Blade