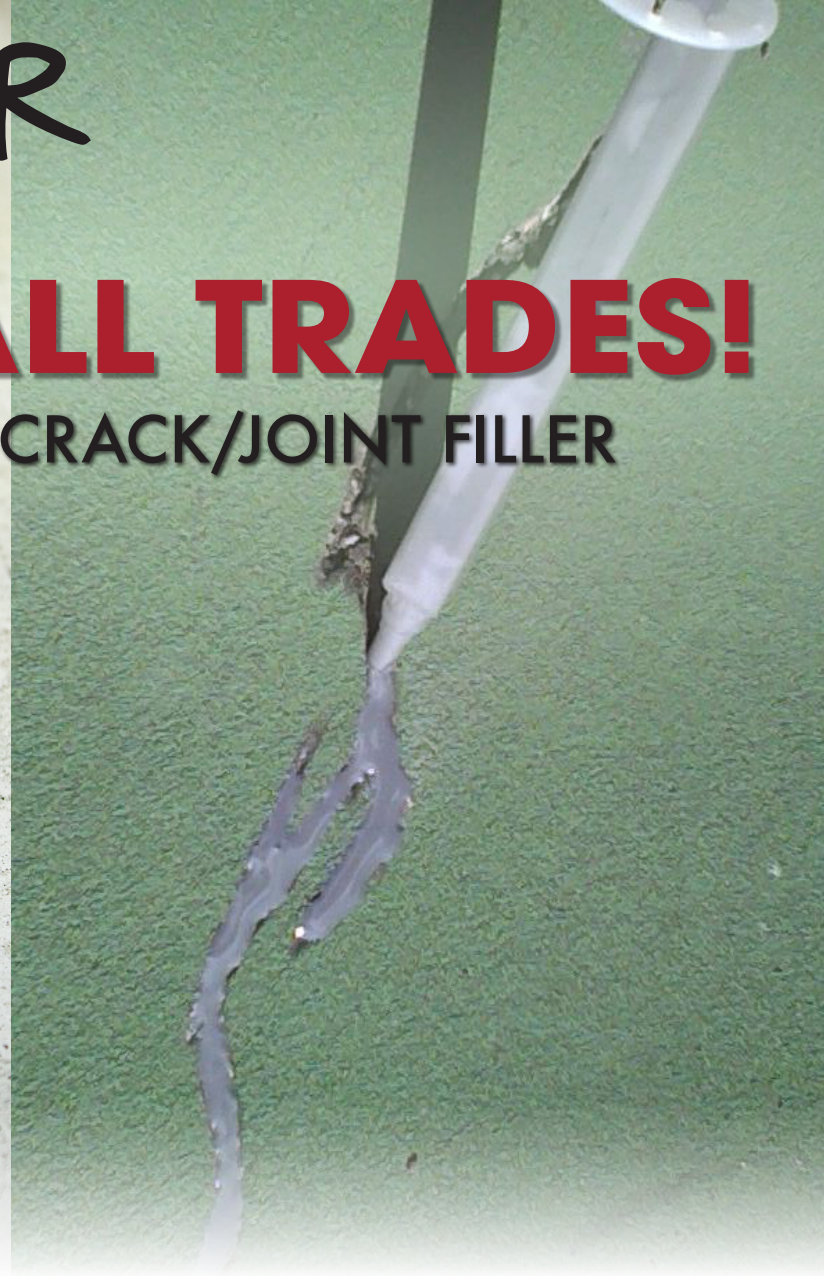


MASTER

~~JACK~~ OF ALL TRADES!

TACK STRIP ADHESIVE & CRACK/JOINT FILLER



ROBERTS® 2018 TACK & CRACK is a versatile fast-setting, high-strength, tack strip adhesive and crack/joint filler. It is a two-part, self-leveling polyurea formulation designed to be dispensed using a standard cartridge gun. When used as a tack strip adhesive, carpet can be stretched and installed in as little as 20 minutes. As a filler, it self-levels and will remain flexible, allowing for 10-15% movement of installed joint width.

- Tough, flexible and versatile
- Fast-setting with high bond strength
- Low viscosity two-part system mixes within nozzle tip

2018

SPECIALTY

TACK AND CRACK

1. PRODUCT NAME

ROBERTS® 2018 TACK & CRACK Tack strip Adhesive & Crack/Joint Filler

2. MANUFACTURER

Roberts Consolidated Industries, Inc.

300 Cross Plains Blvd
Dalton, GA 30721
(866) 435-8665 / (706) 277-5294

3. DESCRIPTION

ROBERTS 2018 TACK & CRACK is a versatile fast-setting, high-strength, tack strip adhesive and crack/joint filler. It is a two-part, self-leveling polyurea formulation designed to be easily mixed and dispensed using a standard cartridge gun. ROBERTS 2018 allows for carpet to be stretched and installed within 20-30 minutes. Used for filling control joints, saw cuts, and active cracks, it will remain flexible and allow for 10-15% movement of installed joint width.

Features and Benefits

- Tough, flexible and versatile – use as a tack strip adhesive or to fill cracks/joints – at any depth and up to ¾" - 1" wide
- Fast-setting with high bond strength
- Stretch and install carpet in 20 minutes
- Quick, easy application with standard cartridge gun
- Self-leveling, low-viscosity two-part system
- Perfect solution for quick repairs
- Enviro-Friendly – solvent-free, LEED® compliant system; VOC <10g/L; SCAQMD Rule 1168

Uses

***BEFORE USE: Please see the Cartridge Preparation Section within the Instructions segment. (Section 5 on the reverse)**

Tack strip Adhesive – Adhering tack strip to concrete and wood subfloors. Can also be used for many other applications including cove molding, carpet shims, transitions, vinyl stair nosing and treads, ceramic and metal bonding to concrete or wood.

Crack and Joint Filler – Used to fill interior and exterior control joints on horizontal concrete substrates. Treats moving cracks. Protects joint edges from spalling due to wheeled traffic.

Coverage

Approximately 125-150 lineal feet per cartridge (1/16" bead)

Substrates

Porous and non-porous surfaces, concrete, APA rated plywood, one layer of well bonded, existing VCT (free of wax/finish), primed gypcrete (refer to ASTM F2419) and terrazzo.

Limitations

- Not for use in expansion joints.
- Cartridge preparation/balancing **must** be strictly followed.
- This product is highly sensitive to moisture and cannot be used if any dampness is present. Substrate must be dry.
- Color varies during cure and may change in exterior applications.
- Not intended for exterior or interior joints that are subject to high movement.
- Refer to Safety Data Sheet, www.robertsconsolidated.com, industry standards, and manufacturer's guidelines and specific recommendations prior to installation for additional information.

4. TECHNICAL DATA

Product Type:	2-part Polyurea
Color:	Part A: Amber / Part B: Gray – When mixed: Concrete Gray
Odor:	Slightly sweet
Working Time:	5 minutes at 0°F (-18°C), 3.5 minutes at 75°F (24°C)
Tack Time:	Up to 20 minutes
VOC:	<10 g/L
Shelf Life:	18 months in unopened container. Store between 60°F (16°C) and 90°F (32°C)
Storage:	Protect from freezing



5. INSTRUCTIONS

CARTRIDGE PREPARATION – *Keep Cartridge in an upright position to prevent material from leaking out of cartridge. Do not tilt cartridge until material is ready to be applied.*

Shake cartridge vigorously for 1 minute, and then stand cartridge upright for 1 minute allowing any bubbles to rise to the top.

Insert the cartridge into a standard caulk gun. Point upward at about a 45° angle. Remove plastic cap and plug from the top of the cartridge.

IMPORTANT! Before attaching the nozzle, balance the cartridge by slowly dispensing a small amount of the material into a disposable container until both components flow evenly from cartridge. Place nozzle onto cartridge and secure by threading in a clockwise direction.

Continue to point the nozzle upward at about a 45° angle away from yourself and others and slowly apply pressure to dispenser, moving the product up through the nozzle until it reaches the tip. Dispense this first full stroke of material into a disposable container. After purging air and balancing, always point the cartridge downward when not dispensing to prevent mixed material in the nozzle from flowing back into the cartridge.

Tack Strip Installation (See Page 4)

- Cut tack strip every 12" to avoid any bows. the strip must be flat in the adhesive.
- Prepare and assemble cartridge as described above (remove plug and attach static mixing tip prior to use).
- Place a nickel sized drop every 5"
- Set the tack strips into place into the adhesive. Do not allow more than a few minutes of open time to install/put down the material and tackstrips.
- After 20-30 minutes, install carpet (at 78°F or above). Excessively hot and humid and colder temperatures will require a longer cure time.
- Clean up any excess material as soon as possible with a clean rag; while material is fresh. Dried material will need to be mechanically removed.

Repairing Cracks or Filling Joints (See Page 4)

Substrate and environment must be completely dry with any presence of moisture prior to usage. To fill cracks, use a saw or grinder with a dry diamond or concrete abrasive blade and cut along the crack, opening it up to 1/8" to 1/4" wide. The edges must be a 90°F to the surface to avoid a feathered edge. NOTES: Cracks may be over filled and shaved down in 60 minutes at 75°F. ROBERTS 2018 is not intended for joints subject to movement over 10-15%.

Blow out and remove all dust, dirt, debris, oil and any other contaminant from the control joint or crack. Use backer rod or kiln dried sand prior to application of adhesive. Allow sufficient depth for joint filler based upon minimum recommended depth of filler. Place mixing nozzle directly over the joint or repair area. Dispense material using full smooth trigger pulls (no short, choppy strokes) and allow material to gravity feed into the crack/joint.

For joints to be shaved, overfill the crack/joint so that material is slightly higher than the face of the concrete slab you are repairing. Allow product to cure for a minimum of 60 minutes at 75°F (24°C) then use a ROBERTS Floor Scraper to shave excess material from top surface. Full cure times are temperature dependent.

Clean-up

Fresh adhesive – remove uncured material with a mild solvent-based cleaner.

Dried adhesive – can only be removed mechanically.

6. AVAILABILITY

Packaging

8.6oz / 254mL Cartridge	2018-9C	075378201892
-------------------------	---------	--------------

7. WARRANTY

ROBERTS warrants that this product will be free from manufacturing defects for 12 months from the date of manufacture, when applied in accordance with ROBERTS' instructions and industry standards. ROBERTS' sole liability is to either supply new product or refund the original purchase price. **This limited warranty excludes all other express warranties including the warranties of merchantability for a particular use or purpose.** Any implied warranties arising by operation of law are limited to one year. ROBERTS will not be liable for any incidental or consequential damages.

Visit www.robertsconsolidated.com for full warranty details.

8. MAINTENANCE

Not applicable.

9. TECHNICAL SERVICES

For technical assistance or installation questions not covered in this document, please contact our Technical Services Department at (706) 277-5294 or visit robertsconsolidated.com.

10. FILING SYSTEM

Division 9

⚠WARNING: This product can expose you to chemicals including Carbon Black and Titanium Dioxide, which are known to the State of California to cause cancer.

For more information on California Proposition 65, go to: www.P65Warnings.ca.gov.



ROBERTS® and the e® logo are registered trademarks of Roberts Consolidated Industries, Inc. • Q.E.P.® is a registered trademark of Q.E.P. Co., Inc. 'LEED®' and its related logo, is a trademark owned by the U.S. Green Building Council® and is used with permission.

BALANCING THE CARTRIDGE

CARTRIDGE PREPARATION – Keep Cartridge in an upright position to prevent material from leaking out of cartridge. Do not tilt cartridge until material is ready to be applied.



- 1** Shake the cartridge vigorously for 60 seconds. Stand upright for at least (1) minute. Allow any bubbles to rise to the top.



- 2** Insert cartridge into the dispenser. Make sure it is properly positioned with the shoulder of the cartridge flush with the front/top bracket of the dispenser. Point upward at a 45° angle. Remove the plastic cap and plug from the top of the cartridge.



- 3** **IMPORTANT:** Before attaching nozzle, balance the cartridge by slowly dispensing a small amount of material into a disposable container until both components flow evenly from the cartridge. Attach nozzle onto cartridge.



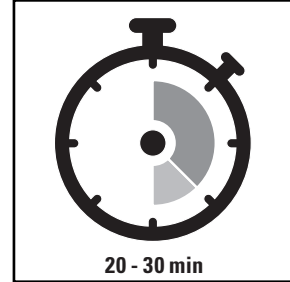
- 4** Continue to point the nozzle upward away from yourself and others while slowly applying pressure to dispenser, moving any bubbles and product up through the nozzle until it reaches the tip. Dispense the first full stroke of material into disposable container. The cartridge is now purged and ready for use.

NOTE: Schedule dispensing to consume an entire cartridge at one time with no intention of flow to prevent material from hardening in mixing nozzle. If you have any problems in dispensing product, replace the nozzle; the product may have begun to cure in the nozzle which will affect the mix ratio. Never transfer a used nozzle to a new cartridge. Repeat the cartridge balancing steps listed above after replacing the nozzle. Product is reusable if the plug and plastic cap are inserted back into the cartridge after use.

INSTALLING TACK STRIP

Prepare and assemble cartridge as described Within the section Balancing the Cartridge (Page 3).

Approximately every 5", place a nickel sized drop of the ROBERTS 2018 and lay the tack strip down. Move tack strip on top to follow order from Tack Strip Installation (Page 2). Be sure to not let more than a few minutes of open/install time to set the tack strip down. The tack strip must lay flat into the adhesive. Let stand for 20 - 30 minutes before installing / stretching in carpet.



FILLING OR REPAIRING CRACKS

Substrate and environment must be completely dry with any presence of moisture prior to usage. To fill cracks, use a saw or grinder with a dry diamond or concrete abrasive blade and cut along the crack, opening it up to 1/8" to 1/4" wide. The edges must be a 90° to the surface (see Figure 1) to avoid a feathered edge (see Figure 2). See Joint Preparation section above for a joint width/depth information.

Figure 1

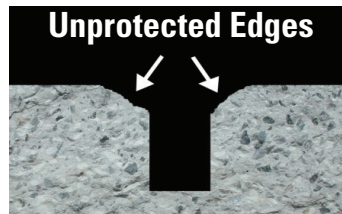
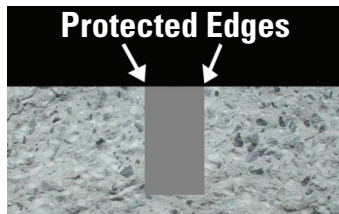


Figure 2

Be sure to remove all dust, dirt, debris, oil and any other contaminant from the control joint or crack. Use backer rod or kiln dried sand prior to application of adhesive.

Coverage Rates*:	
Joint Size (Inches)	Linear Inches Per 8.6oz
1/8" X 1"	8.28"
1/8" X 1-1/4"	6.72"
1/8" X 1-1/2"	5.52"
1/8" X 1-3/4"	4.8"
1/8" X 2"	4.2"
3/16" X 3/4"	7.44"
3/16" X 1"	5.52"
3/16" X 1-1/4"	4.44"
3/16" X 1-1/2"	3.72"
3/16" X 1-3/4"	3.12"
3/16" X 2"	2.76"
1/4" X 1"	4.2"
1/4" X 1-1/4"	3.24"

*This is a general table for estimating product usage.

Coverage Rates*:	
Joint Size (Inches)	Linear Inches Per 8.6oz
1/4" X 1-1/2"	2.76"
1/4" X 1-1/3"	2.4"
1/4" X 2"	2.04"
1/2" X 1"	2.04"
1/2" X 1-1/4"	1.68"
1/2" X 1/2"	1.32"
1/2" X 3/4"	2.04"
1/2" X 2"	1.08"
3/4" X 1"	1.32"
3/4" X 1-1/4"	1.92"
3/4" X 1-1/2"	0.84"
3/4" X 1-3/4"	0.84"
3/4" X 2"	0.6"

*This is a general table for estimating product usage.